



Głóski, 19 Street
63-460 Nowe Skalmierzyce
Poland

Mr. Szczepański Rafał
+48 519 134 062
kontakt@raffmachines.com
<https://www.raffmachines.com>

Mixer - Grinder Nadratowski MG 900/160

Mixer grinder Nadratowski MG 900/160

Price: On request



This offer is subject to change and non-binding. Changes, errors and prior sale explicitly reserved.

Attributes

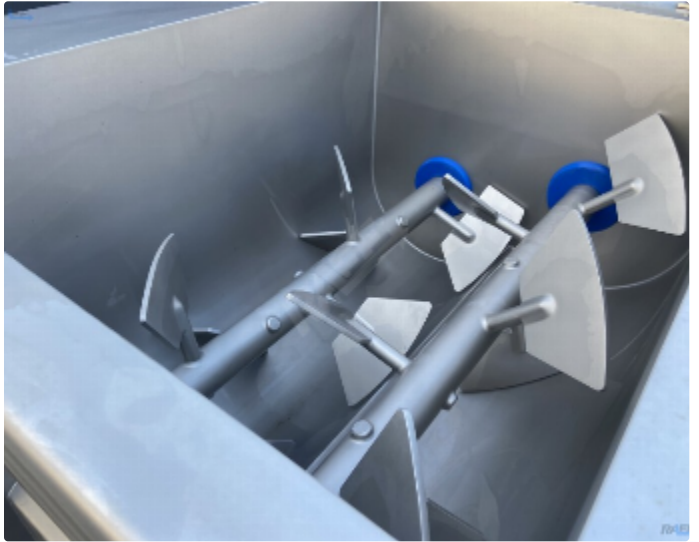
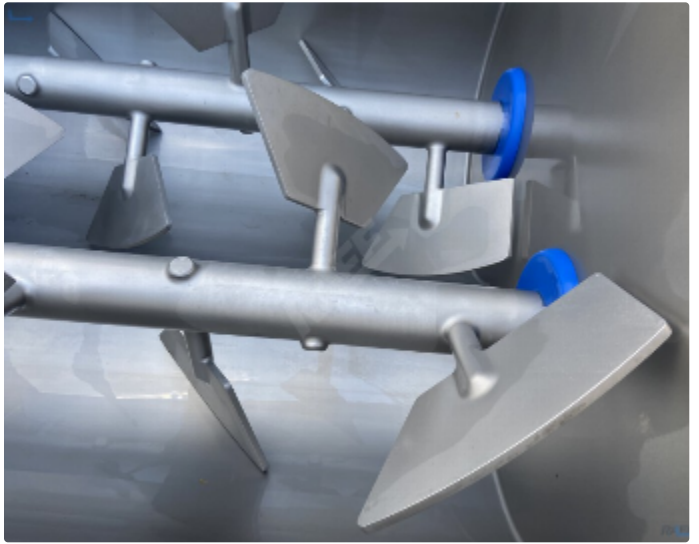
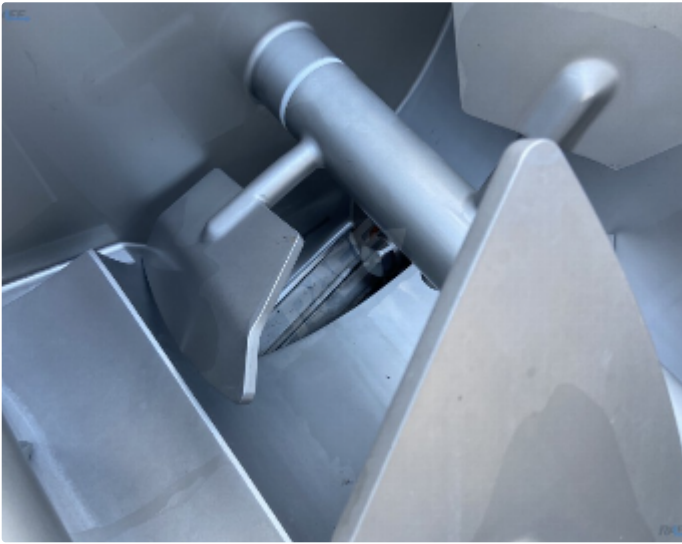
Marka:	Nadratowski
Typ:	MG 900 / 160
Moc:	42 kW
Rok produkcji:	2015
Waga:	1970kg

Description

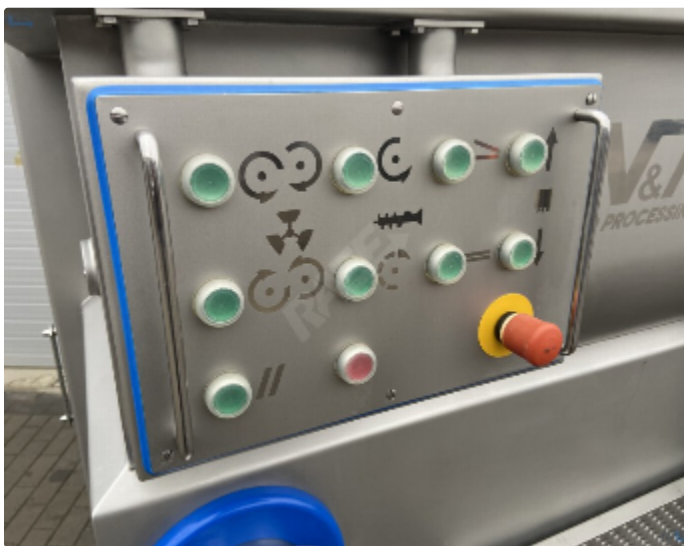
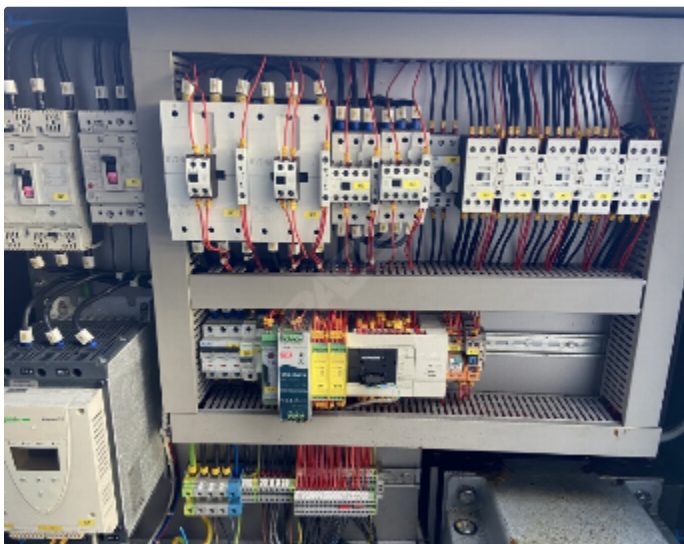
Mixer Grinder Nadratowski MG 900/160 with a power of 42 kW

The MG series grinder mixers are an innovative combination of a two-shaft blade mixer and a high-class meat grinder, which is ideal for preparing, grinding and shaping products such as minced meat or other stuffing. The combination of two devices in one compact body saves a lot of space, and above all, a significant shortening of the process by eliminating transport between a standard mixer and a grinder, as would be the case with a conventional solution.

Additional photos of featured item



This offer is subject to change and non-binding. Changes, errors and prior sale explicitly reserved.



This offer is subject to change and non-binding. Changes, errors and prior sale explicitly reserved.



This offer is subject to change and non-binding. Changes, errors and prior sale explicitly reserved.